

Driving agroecological transitions in the humid tropics of Central and Eastern Africa through traNsdisciplinary Agroecology Living LabS



THE CANALLS PROJECT

Nestor NGOUAMBE (AFAAS)



Project overview

| | |
|--------------------------|--|
| Work Programme | HORIZON-CL6-2022-FARM2FORK-01-12 Agro-ecological approaches in African agriculture systems |
| Type | Research and Innovation Actions (RIA) |
| Duration | 48 months (1 Jan 2023 – 31 Dec 2026) |
| Funding Authority | European Research Executive Agency |
| Coordinator | CENTRE DE COOPERATION INTERNATIONALE EN RECHERCHE AGRONOMIQUE POUR LE DEVELOPPEMENT - CIRAD |
| Partners | 18 partners & 2 associated (13 countries -7 African and 6 European) |
| AFAAS | Co-Leader of 2 WORKPACKAGES (3 MAINS TASKS) |

To drive agroecological transitions in the humid tropics of Central and Eastern Africa via multi-actor transdisciplinary Agroecology Living Labs (ALLs)

Project Partners



UNIVERSITY OF
HOHENHEIM



NIBIO
NORWEGIAN INSTITUTE OF
BIOECONOMY RESEARCH



rikolto

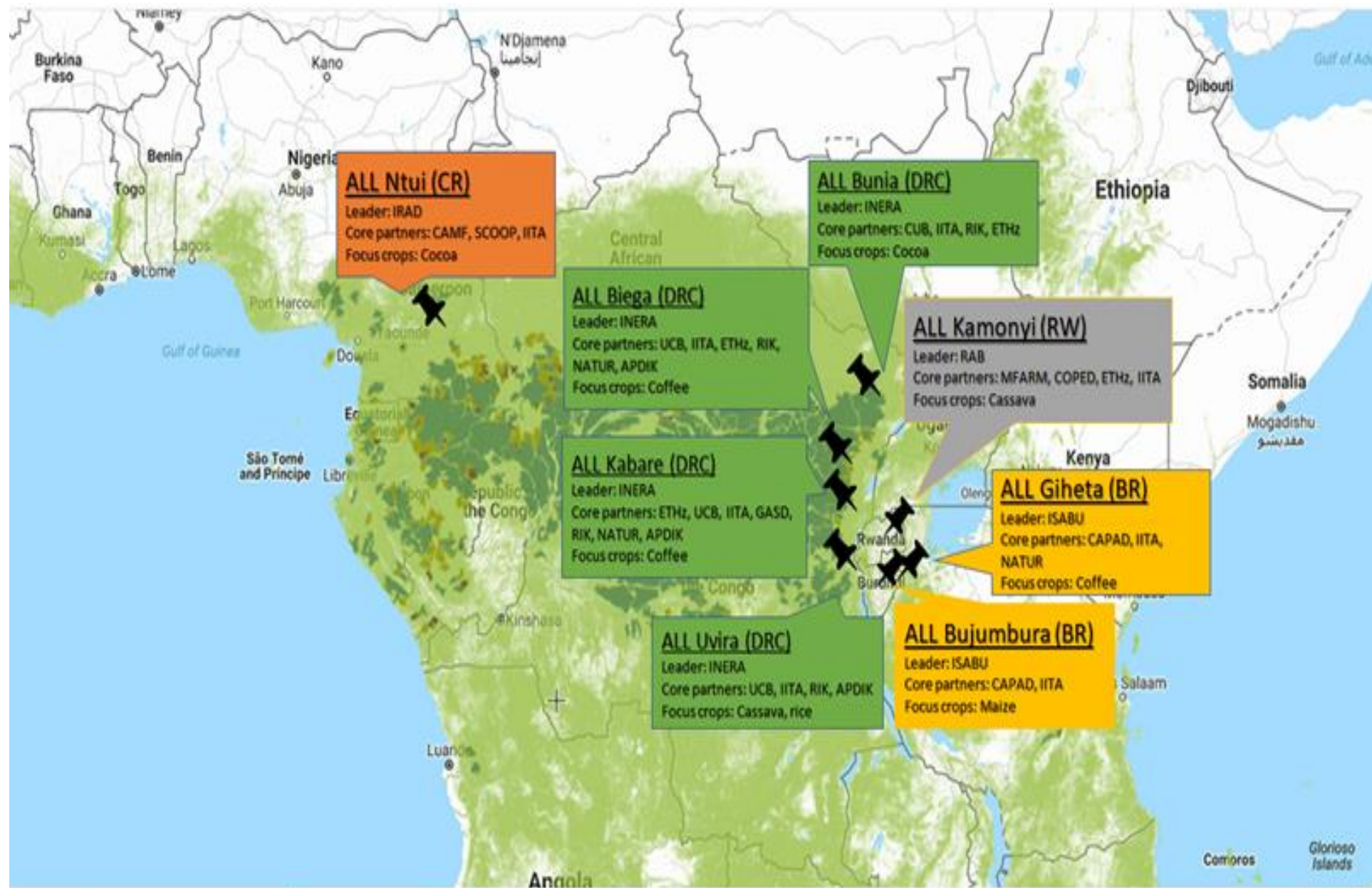


ETH zürich



Project Objectives

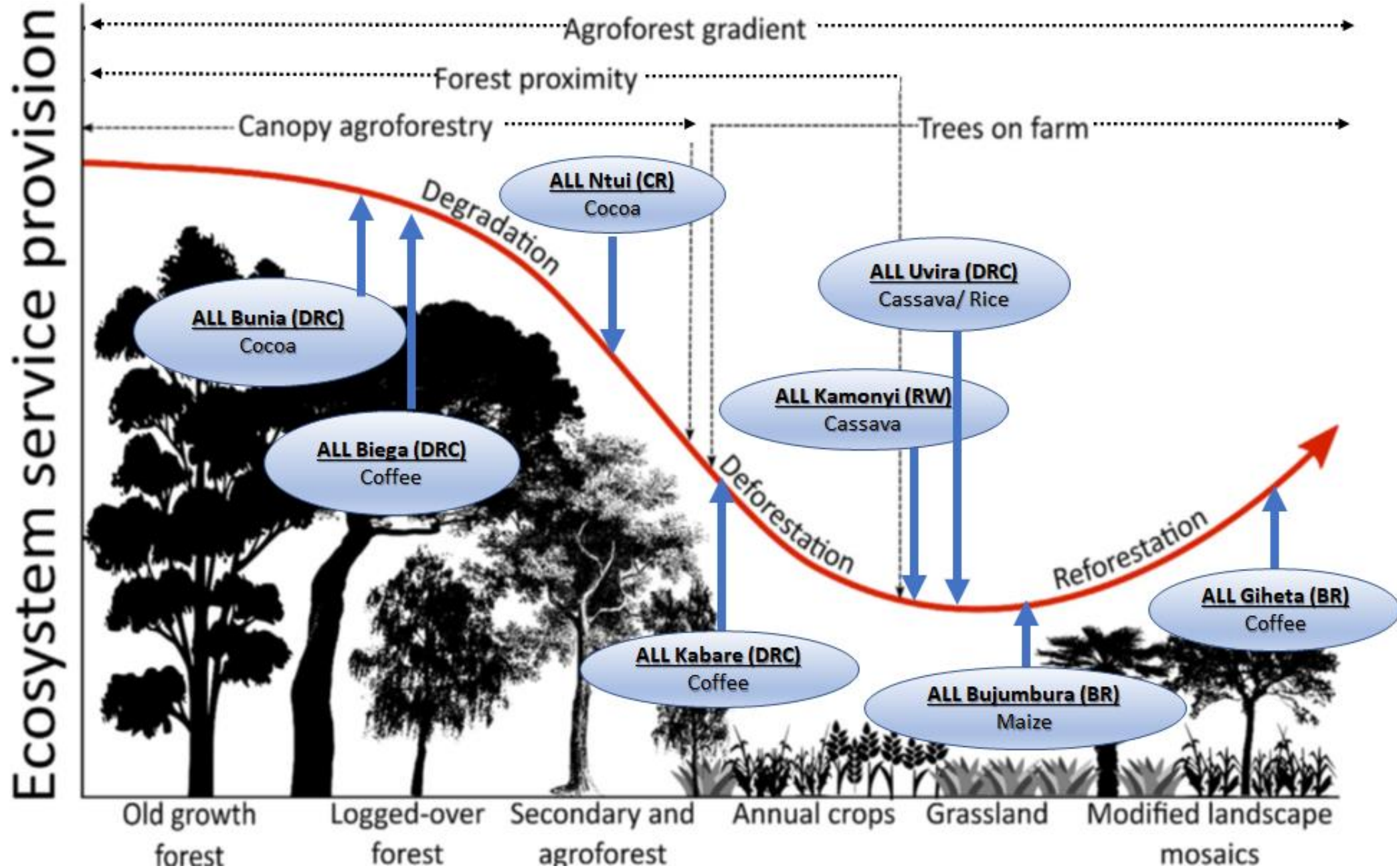
1. Set up 8 multi-actor **Agroecology Living Labs (ALLs)** in DRC, Burundi, Cameroon and Rwanda
2. Develop **practical tools to identify combinations of agroecological practices** - ☐ Create and test them (in the field)
3. **Monitor and measure the socio-economic and environmental performance** of identified combinations of agroecological practices (evaluation)
4. Deliver **sustainable business models** along with services and tools for facilitating access to markets and enhancing demand for agroecological products
5. Support and **build capacity for the adoption** of agroecological practices (dissemination and exploitation of results)



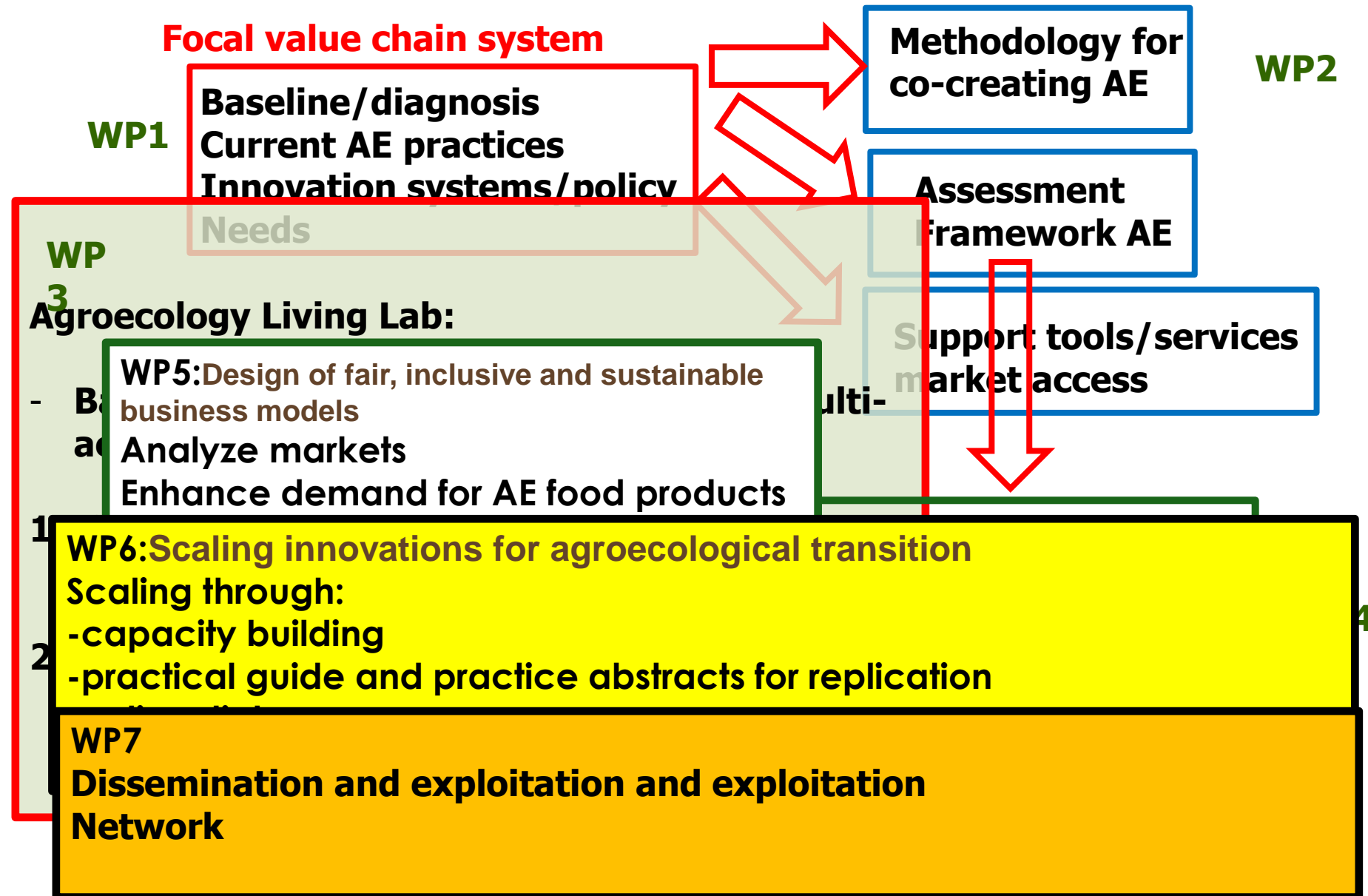
Implementation Strategies

Transdisciplinary Approach with farmer's at the corner stones of all experimental strategies.

Local partners in each Living Lab are in charge of daily implementation of activities

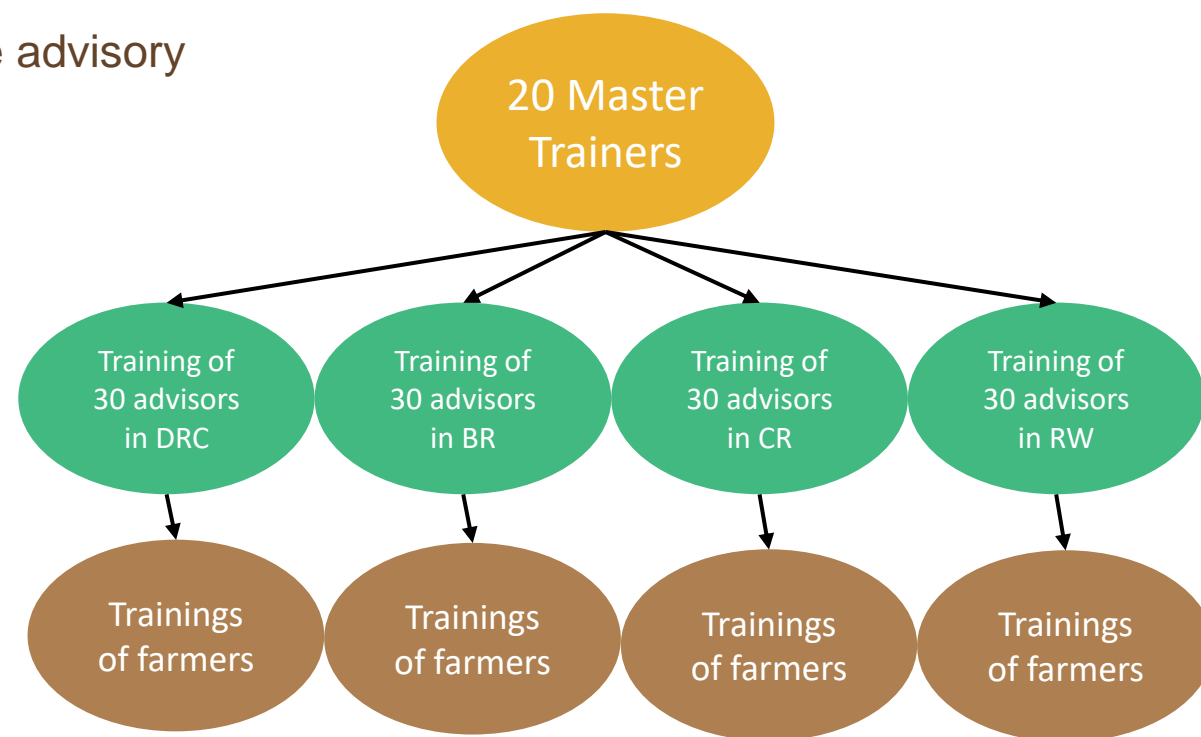


Work Packages

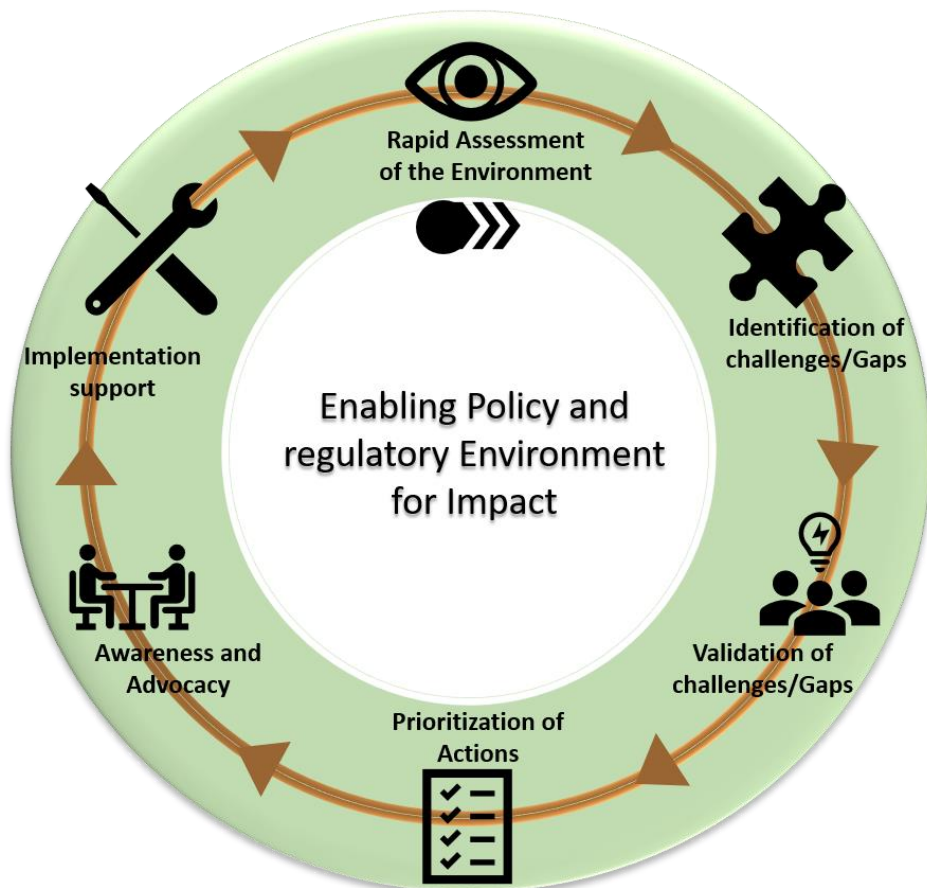


Methodology (WP6)

- Build the capacity of advisory services on the individual and organization level, based on a self-assessment
- Enable the advisors to act as a multiplier in the advisory service systems at national level
- Methods
 - Experiential learning
- Tools
 - Organizational Capacity Assessment Tool for Innovations (OCATI)
 - Train-the-trainers (ToT)



Success and Achievements



CHARACTERIZATION OF LIVING LABS

CO-CREATION WORKSHOP

EXPERIMENTAL PLOT IN EACH LIVING LAB BASED ON PREVIOUS PROJECTS IN TARGETED COUNTRIES (SOIL HEALTH, RUNRES,

10 PRACTICES ABSTRACT FOR AGROECOLOGICAL PRACTICES

Market analysis for agroecological food products

Challenges and Lessons Learned

- Differentiation of agroecology concept from others concept like: regenerative agriculture, parmaculture, biofarming, agroforestry ect.... is very difficult
- application of the 13 AE principles is very difficult due to the specific context of each living labs
- lack of specific AE policy in most countries (CSA policy/Environment policy/sustainable agriculture policy are guiding AE practices)
- Main lesson up to now: co-creation is a key principles to let all stakeholder get involved in each living Lab

Sustainability and Scaling

- **Long-Term Sustainability:** a continental Agroecological Network and community of practices is on progress. At this stage a study is under process to assess existing AE platforms accross sub-regions in Africa. they will be approach to join hand or be part of the continental AE network.
- **Scalability:** Practices Abtract developed and replication guide will be used by all actors engaged with AE accross Africa.

Learn more about CANALLS

<https://www.canalls-project.eu>



African Forum
for Agricultural
Advisory Services

Kigobe Road, House No. 26 - Ministers Village
P.O. Box 34624 Kampala, Uganda
Tel: +256 312 313 400
Email: info@afaas-africa.org
Web: www.afaas-africa.org

[afaas africa](#)

[@afaasinfo](#)

THANK YOU